

Branch Reference

Steel structure trade

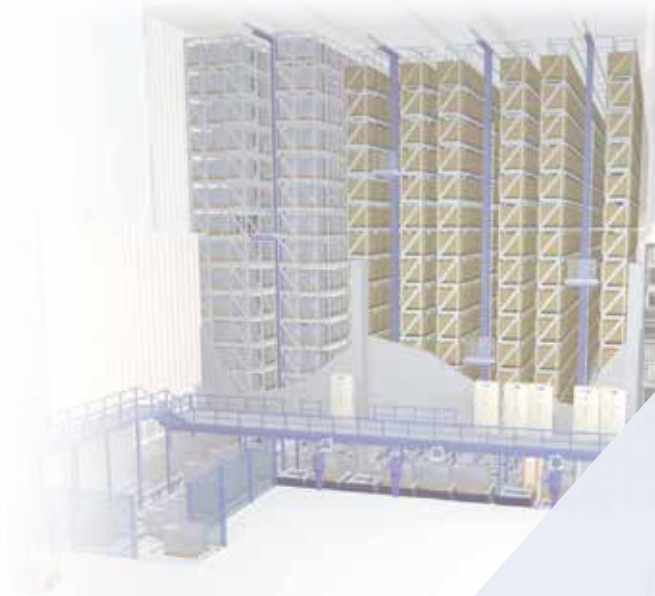


The Customer

For decades the Otto Lehmann Group has produced building articles for roof drainage and commodities for i.e. snow catching systems. With this combination of products the group has become a top supplier. The beginnings of the original ornament manufacturer date back to the year 1851. Following the introduction of a new ERP System in 2004 a new concept for the fully automatic high bay storage became necessary. The adjustment by Klinkhammer happened just in time.

The Requirement

Reconstruction and modernization of the entire warehouse within a six weeks period during production process was the customer requirement. Completely new solutions for hardware and software were realized. The high bay storage with roughly 5600 positions built in 1985 no longer conformed to modern standards of warehouse management. After manual order acceptance data was manually entered into the system. Picking routes were inflexible. Real time order tracking and warehouse monitoring was not possible.



Klinkhammer Intralogistics GmbH

Wiesbadener Str. 11 · 90427 Nuremberg · Germany
Phone +49 911 930 64 0 · Fax +49 911 930 64 50
info@klinkhammer.com · www.klinkhammer.com



Apart from the manually commissioning also the complete withdrawal and supply with the stacker are possible

The Solution

New customer requirements (from homogeneous pallets containing one type of goods only to mixed pallets) called for a higher pallet supply per hour and an increased number of single cycles. One transverse carriage proved to be insufficient for the connection of four gangways. A double transverse carriage now performs 70 double cycles per hour and serves four storage places.

Data and facts

Pre-zone: Pallet conveying technology with chain and roller conveyor, double transverse carriage, three working stations with height adjustable pallet spaces, one storage space with shape control and one station for complete retrieval.

Automatic high bay storage: Lane 1-3: silo storage, 3144 spaces on 15 levels, 3 stacker cranes, telescopic fork with lifting device; Lane 4: silo storage, 2465 spaces on 16 levels, stacker crane, Multi lifting device.

System control: S7-300+ for each stacker crane; S7-400 for the conveying technology, profibus/ethernet network; operation of system via touchpanels; visualization of system via Convis remote maintenance via ISDN by the Klinkhammer Group.

Stacker terminal: even in mobile mode fully LVS functionality



Complete transparency: stationary LVS working place



Picking zone: Three working places with three supply units each.

